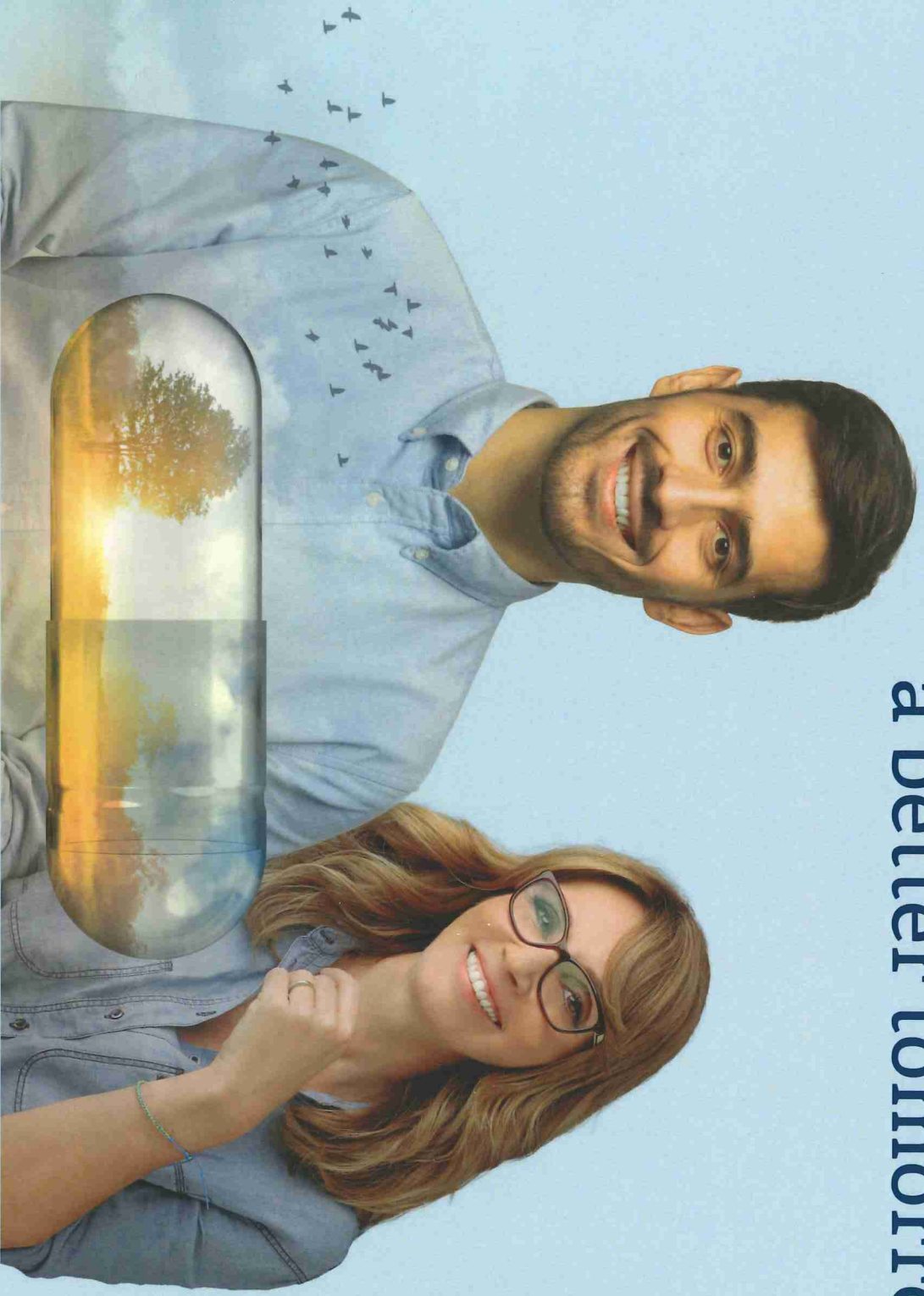


Looking towards a better tomorrow



The ENHANCE-CD Study for Crohn's disease is enrolling now

The ENHANCE-CD Study is looking at a potential new oral, once-daily medication to see how safe it is and if it helps people with Crohn's disease (CD).

We plan to enroll a wide variety of participants because CD and medications may affect people differently.

You **may** be able to take part if you:

- are 18 to 75 years of age
- have a diagnosis of moderately to severely active Crohn's disease
- received treatment for Crohn's disease that did not work well, stopped working, or you had to stop taking because of side effects.

Participants will receive all study-related tests and medication at no cost.



Find out more

Please contact us:



CONTACT US:
210-590-7891 210-581-2794